


# THE ROLE OF THE INNER PHARMACY IN THE PREVENTION AND TREATMENT OF AIDS

Roberto Giraldo, M.D.

**HANS SELYE** The general adaptation syndrome and  
the diseases of adaptation. *J. Clin Endocrinol*  
**1946**; 6: 117-230

---

# Seropositivity and AIDS as Conditions of Adaptation

**Stressor Agents**  **Stress Responses**

**HANS SELYE**

**Responses  
to Stress**

**1st: Stage of Alarm**

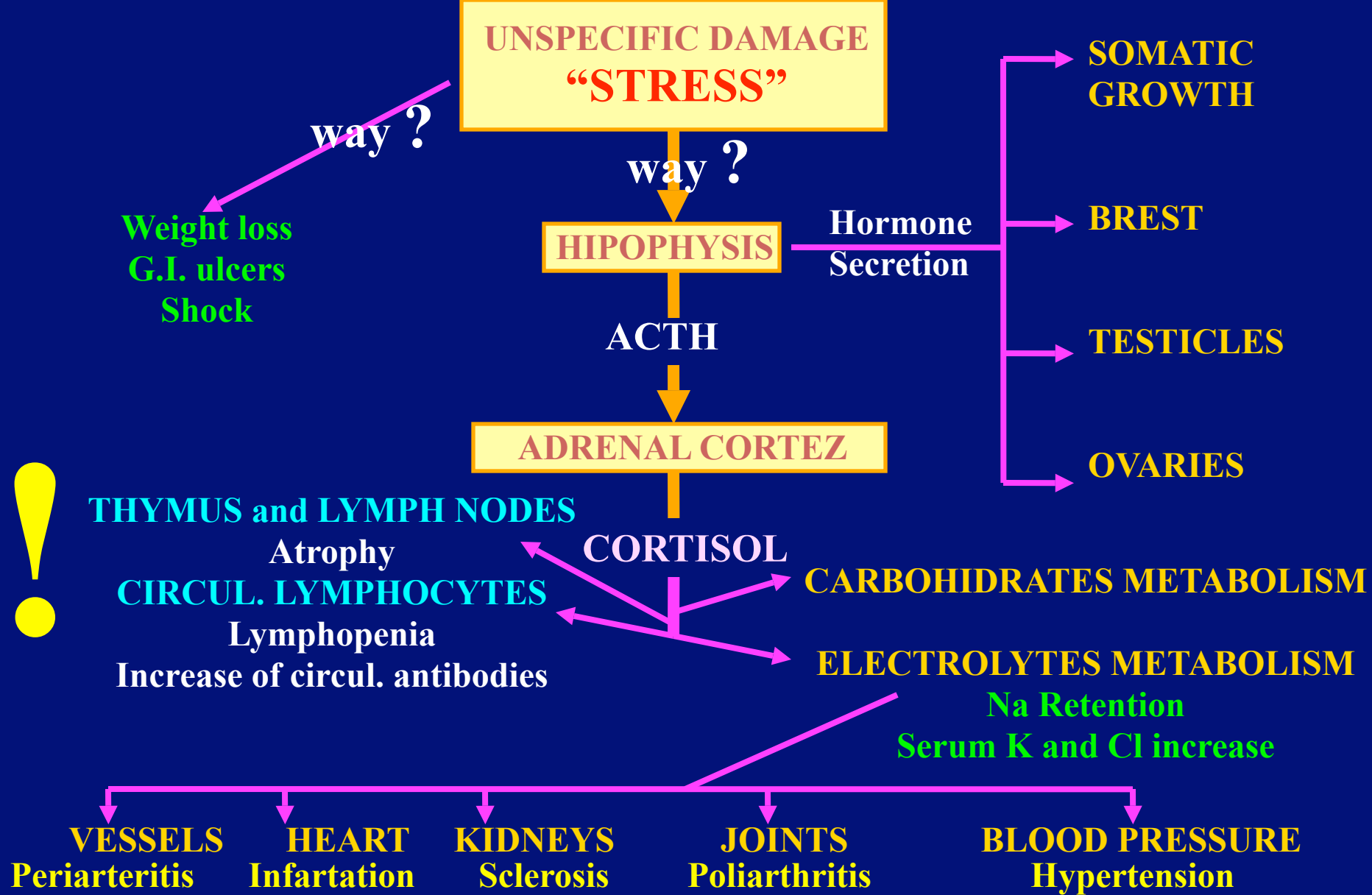
**2nd: Stage of Adaptation**

**3rd: Stage of Saturation**

**General Adaptation Syndrome**  
**Diseases of Adaptation**

**Selye H.** A syndrome produced by diverse nocuous agents.

*Nature* **1936**; 138: 32



**HANS SELYE** The general adaptation syndrome and the diseases of adaptation. *J. Clin Endocrinol* 1946; 6: 117-230







# Agrochemicals – Pesticides – Insecticides – Fungicides



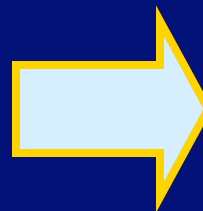
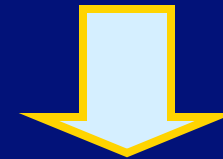




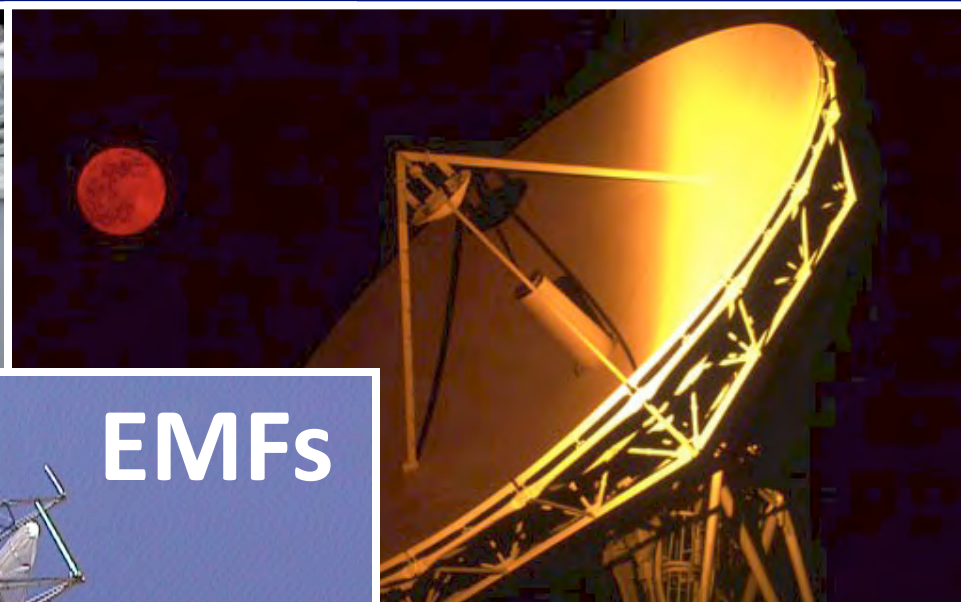


# CHEMICAL POLLUTION

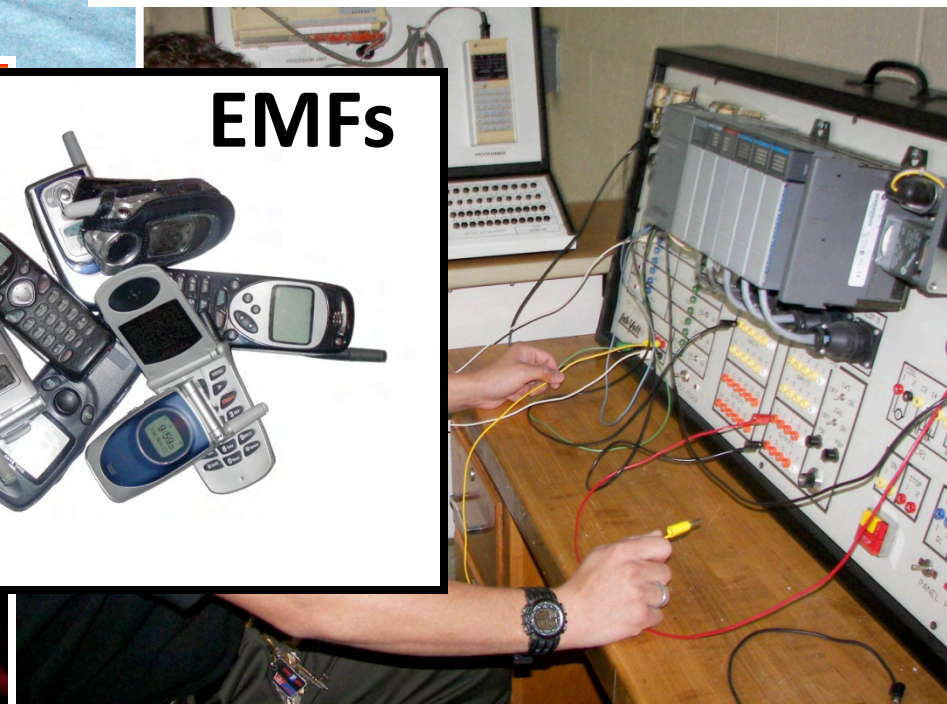




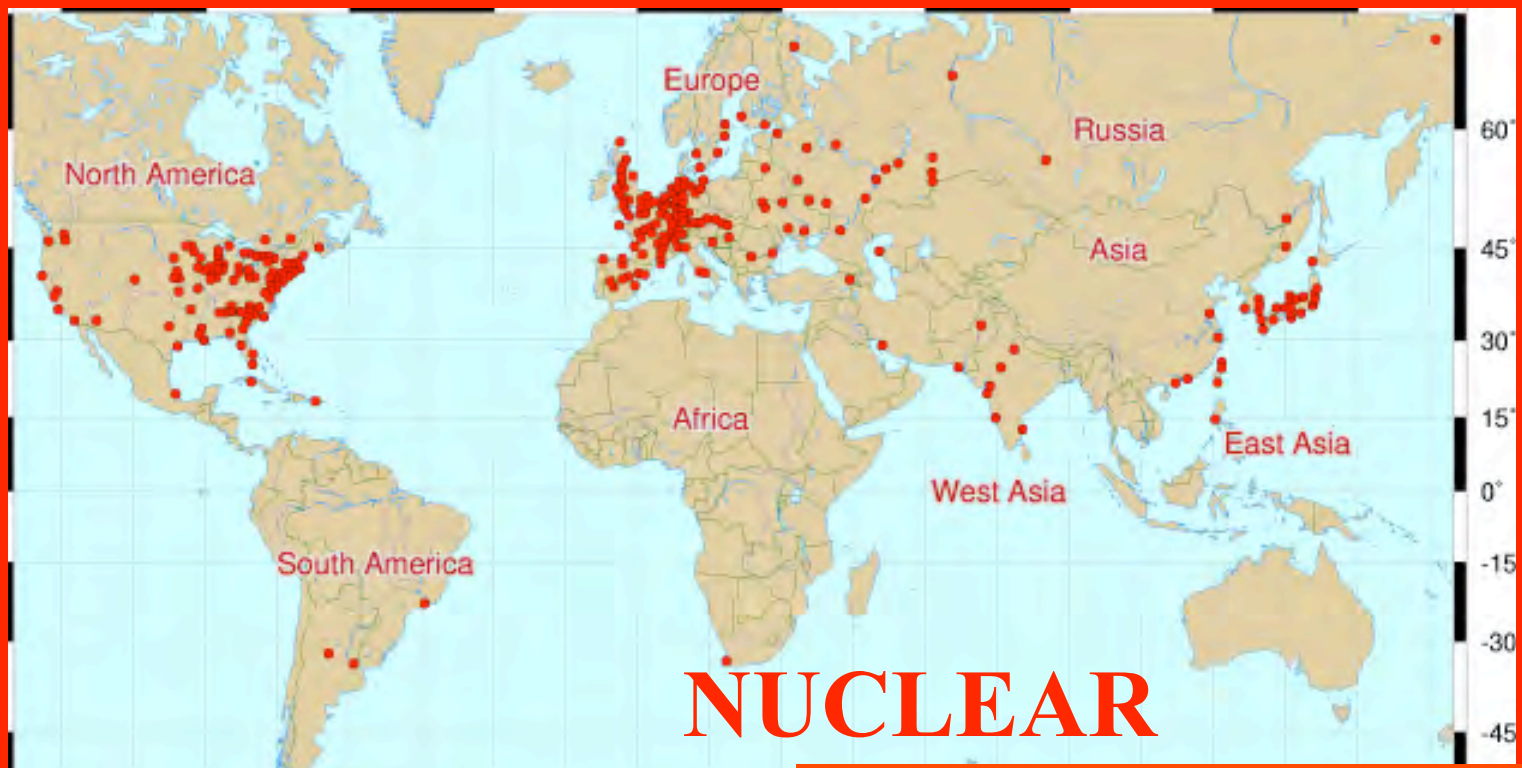














**70,000  
nuclear  
bombs**





© 2005 HowStuffWorks







**“Codex  
Alimentarius”**



**Vaccines  
Hormones  
Antibiotics  
Genetic alterations**









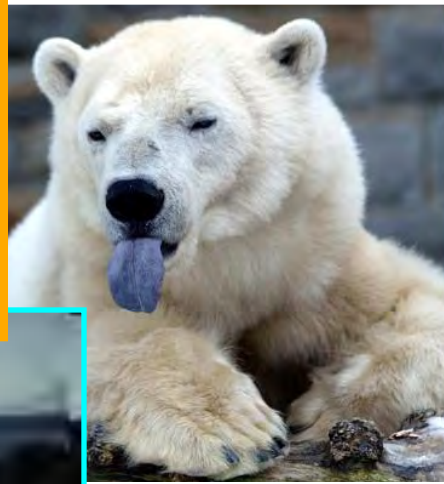




# Immunological Stressor Agents

Chemical   Physical   Biological   Nutritional   MENTAL

## Toxic effects on





# IMMUNODEFICIENCY (AIDS) IN ANIMALS

**Dolphins**  
**Whales (beluga)**  
**Seals**  
**Sea lions**  
**Atlantic sharks**  
**Coral reefs**  
**Sea sponges**  
**Salmon**  
**Iguanas**  
**Lizards**  
**Turtles**

**Great Lakes birds**  
**Albatrosses**  
**Vultures**  
**Mooses**  
**Polar bears**  
**Horses and minks**  
**Frogs & other amphibians**  
**Snails**

**Honeybees**

**Dr. Juan Sanz (Bilbao): “By 2050 37%  
of current species of animals  
will be extinct”**

**“everything  
is  
dying”**

# Newly Endangered Species





# Yantze River Dolphins



# IMMUNODEFICIENCY (AIDS) IN PLANTS

**Increase of viral, bacterial, fungal, parasitic, and tumor diseases in many trees and agricultural crops**

**1990 New Scientist: “Acid rain will cost Europe 118 million cubic metres of wood (US \$40 billion)”**

**2004 U. Texas: “Serious nutrient decline in garden crops (vegetables, melons, strawberries, etc) over the past 50 years”**

**2004 Dr. Juan Sanz (Bilbao): “By 2050 15% of current plant species will be extinct”**



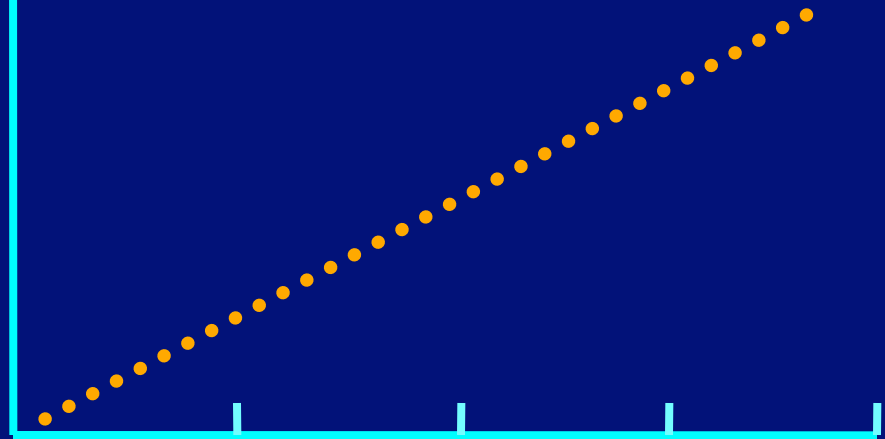
# STOP A DESTRUIÇÃO DO MUNDO



Propostas para libertar  
a economia, a educação, as artes,  
os meios de comunicação,  
o ambiente, os serviços de saúde,  
a política e a sociedade da  
corrupção do poder econômico.

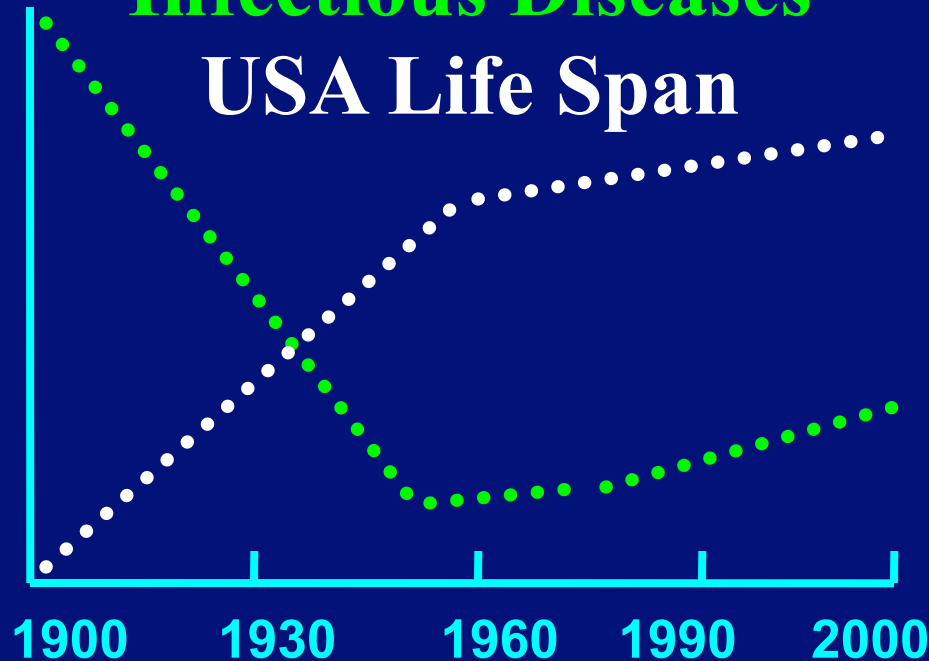
[www.stop.org.br](http://www.stop.org.br)

## Immunodeficiency



## Infectious Diseases

### USA Life Span



# Seropositivity and AIDS as Conditions of Adaptation



**STRESSOR  
AGENTS**

```
graph TD; A[STRESSOR AGENTS] --> B[EFFECTS]; B --> C[CHRONIC ACTIVATION]; B --> D[CHRONIC DETERIORATION]; C --> E[IMMUNE SYSTEM]; D --> E; E --> F[WEAK -> COLAPSE];
```

The diagram is a flowchart on a dark blue background. At the top is a light green arrow pointing downwards, containing the text 'STRESSOR AGENTS' in green. Below this is a yellow rounded rectangle with a red border containing the text 'EFFECTS' in red, with 'IMMUNOGENIC' on the left and 'IMMUNOTOXIC' on the right in red. Three yellow arrows point from this box: two small ones to 'CHRONIC ACTIVATION' and 'CHRONIC DETERIORATION' (both in blue rounded rectangles with blue borders), and a large central one pointing to 'IMMUNE SYSTEM' (a light blue rounded rectangle with a blue border). A large light blue arrow points from 'IMMUNE SYSTEM' to a pink oval at the bottom containing 'WEAK' and 'COLAPSE' in purple, with a purple arrow pointing from 'WEAK' to 'COLAPSE'.

**EFFECTS**  
**IMMUNOGENIC** **IMMUNOTOXIC**

**CHRONIC  
ACTIVATION**

**CHRONIC  
DETERIORATION**

**IMMUNE SYSTEM**

**WEAK**



**COLAPSE**

# STRESSOR AGENTS

Multiple  
Repeated  
chronic

exposures

- Chemical
- Physical
- Biological
- Nutritional
- EMOTIONAL

HOST with specific  
personality

## IMMUNOSUPPRESSION

- Light
- Mild
- Severe
- Transitory
- Prolonged

INFECTIONS  
TUMORS

METABOLIC DISEASES

**AIDS:**  
Collapse of the  
Immune System



**EXPOSURE TO IMMUNOLOGICAL STRESSORS**

**STRESS RESPONSES**

**Cortisol**

**Adrenaline  
Noradrenaline**

**Stress  
Proteins**

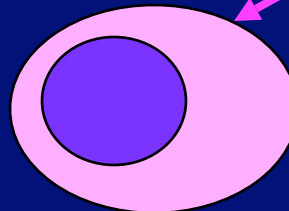
**POSITIVE "HIV" TESTS**

**IMMUNE SYSTEM  
ACTIVATION**

!

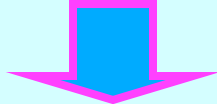
**INCREASE  
Cyclic AMP**

**Oxidative Stress  
Nutritional Deficiencies**

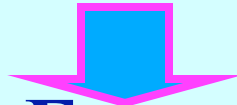


**NO CELLULAR DIVISION (AIDS)**

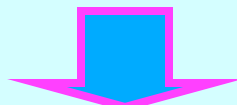
**Exposure to  
Stressor Agents**



**Immunodeficiency**



**More Exposure to  
Stressor Agents**



**AIDS**

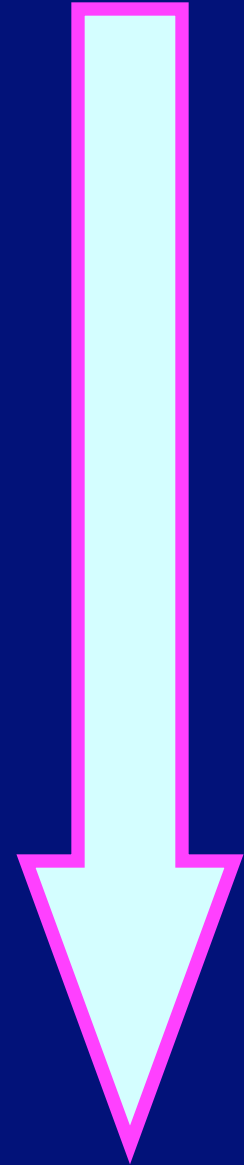
**POSITIVE**

**ELISA**

**Western  
blot**

**PCR**

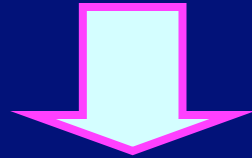
**Tests**



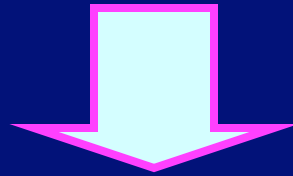
**Seropositivity is consequence not cause of AIDS**



# **SEROPOSITIVE INDIVIDUALS**



**intoxicated, oxidized, weakened**



**higher risk of AIDS  
and other illnesses**

HOWEVER



**multiple  
repeated  
chronic**

**exposure to  
stressor  
agents**

**some get sick and  
some do not**

**some develop certain illnesses  
while others develop  
different illnesses**

**WHY?**

**IT DEPENDS  
FUNDAMENTALLY ON  
THE STATUS OF OUR  
INNER  
PHARMACY**



**The**  
**INNER**  
**PHARMACY**  
**acts according to**  
**our emotions**

# EMOTIONS

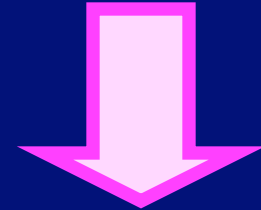
```
graph TD; A[EMOTIONS] --> B[POSITIVE]; A --> C[NEGATIVE]; B --> D[STIMULATE INNER PHARMACY]; C --> E[DEPRESS INNER PHARMACY]
```

**POSITIVE**



**STIMULATE  
INNER  
PHARMACY**

**NEGATIVE**



**DEPRESS  
INNER  
PHARMACY**



# TOXIC SENTIMENTS

**REJECTION  
OF  
LOVE**

**ENVY**

**Arrogance**

**Anger**

**Avarice**

**Laziness**

**Gluttony**

**Lust**

**MEGALOMANIA**

**Anxiety**

**Depression**

**Panic**

**Lack of hope**

**Grudge feelings**

**Fear**

**Perfectionism**

**Rigidity**

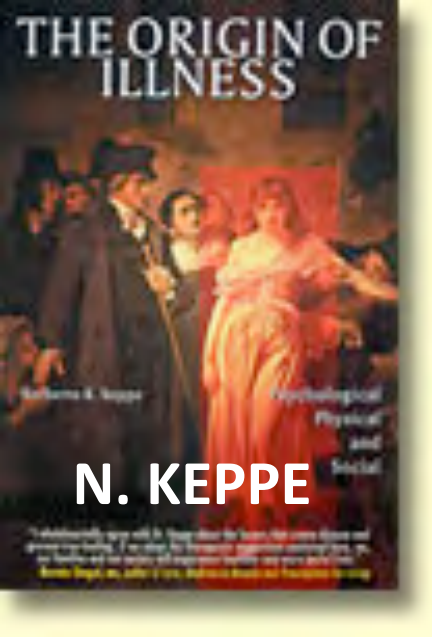
**Intolerance**

**Intransigence**

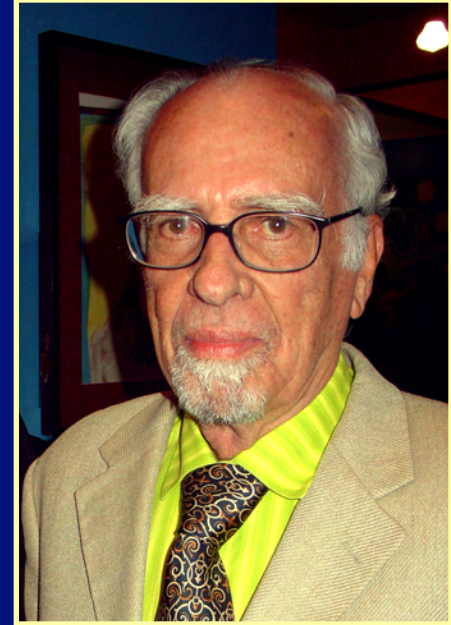
**Paranoia**

**Agressivity**

**NARCISSISM**



# NARCISSISM



## ENVY

## MEGALOMANIA

ORIGIN OF ALL  
PSYCHIC, ORGANIC &  
SOCIAL ILLNESSES



**“All diseases are  
psychosomatic  
”**

**Psychosomatic**

**George Solomon (1931 – 2001)**

**Psychoimmunology**

**Robert Ader (U. of Rochester)**

**Psychoneuroimmunology**

# **We generate our own diseases**

- **We humans get what we deserve**
  - **Diseases are caused by a lack of ethics**
  - **Psychopathology is present in all human beings**
  - **Human beings destroy everything**
  - **Why are we destroying our home?**
  - **Atheism is a path to sickness**
  - **Specific personalities lead to specific diseases**
- 
- **HIV as an excuse (a mental projection)**
  - **Some get sick by denying the existence of AIDS**
  - **Countries with high and low incidence of AIDS**
  - **Happiness is the best vaccine against AIDS**
  - **Energetic resonance rather than contagiousness**

# **Our body reveals what we do not want to accept**

**DIGESTIVE DISEASE = COMPLAINER, PERFECTIONIST**

**HIGH BLOOD PRESSURE = ANGER**

**ARTHRITIS = CRITICAL, RIGID, INTRANSIGENT**

**INFECTIONS = ANGER**

**PAIN = GUILT, FEAR**

**GYNECOLOGIC DISEASE = REJECTING FEMINITY**

**PROSTATIC DISEASES = SEXUAL REPRESSION**

**KIDNEY DISEASES = PERFECTIONISM**

**SKIN DISEASES = NARCISSISM, EXHIBITIONISM**

**NEUROLOGIC DISEASES = REPRESSION OF EMOTIONS**

**ALLERGIES = DEFENSIVE, PARANOIC**

**HEART DISEASES = OBSESSIVE, PERFECTIONIST**

**RESPIRATORY DISEASE = INFANTIL, DEPENDENT**

**CANCER = HATE, SADNESS, RESENTMENT**

**AIDS = SELF-DESTRUCTION**



AIDS IS AN  
EMOTIONAL,  
TOXIC, AND  
NUTRITIONAL  
SYNDROME

# Learning from sero-positive individuals:

- **Attracting the disease** (asking for the “AIDS test”)
- **Pride of being sick** (“The disease as a path”)
- **“Fear” of death** (fear of AIDS, fanatic for natural therapies and lifestyles, fasting, eternally doubting)
- **Homophobia in seropositive individuals**
- **Envy** (psychogenetics, altered personality, neurosis)
- **Narcissism** (isolation, self-sufficiency, “my condition”)
- **Self-destructive** (alcohol, drugs, orgys, blaming society)
- **Arrogance** (know everything)
- **The arrogance of African women** (depression, lack of hope)
- **Immunodeficiency in unwanted pregnancies**
- **Pride and arrogance within NGOs**

# Personality required for Seropositivity and AIDS

**Sadness** (depressive)

**Fearful of the outside** (paranoid)

**Bad habits** (self-destructive)

**Egocentric** (narcissistic)

**Self-important** (megalomaniac)



**ALTERNATIVE  
DIAGNOSES OF  
ENERGETIC  
BIOCHEMICAL  
PHYSIOLOGICAL  
STRUCTURAL  
ALTERATIONS**

# STRESS RESPONSES

Free  
Radicals

Symbiose - Dysbiose

Energetic alter.  
“Endobionts”  
“Energins”

↓  
Fermentation

OXIDATION

ACIDITY  
ALCALINIZATION

ENDOBIOSIS

↓      ↓      ↓  
CONTROL BY INNER PHARMACY

↓  
HOMEOSTASIS  
HEALTH

↓  
ENERGETIC, METABOLIC, AND  
ORGANIC ALTERATIONS  
FLUIDS    CELLS    TISSUES



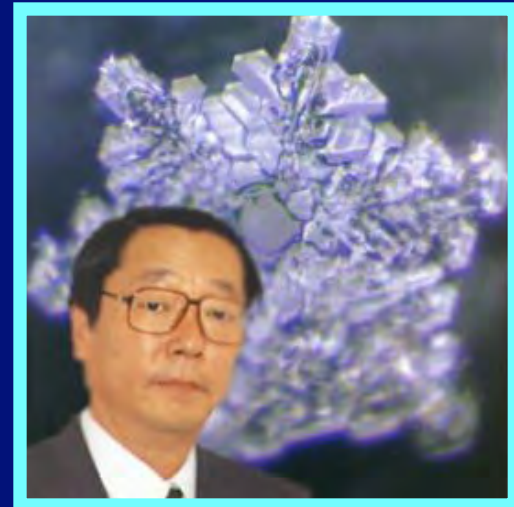
Words of love and encouragement  
are symmetrical and pure like snowflakes



Words of hate, anger and criticism are  
discolored and malformed

**I LOVE YOU**      **I HATE YOU**

**MASARU EMOTO**





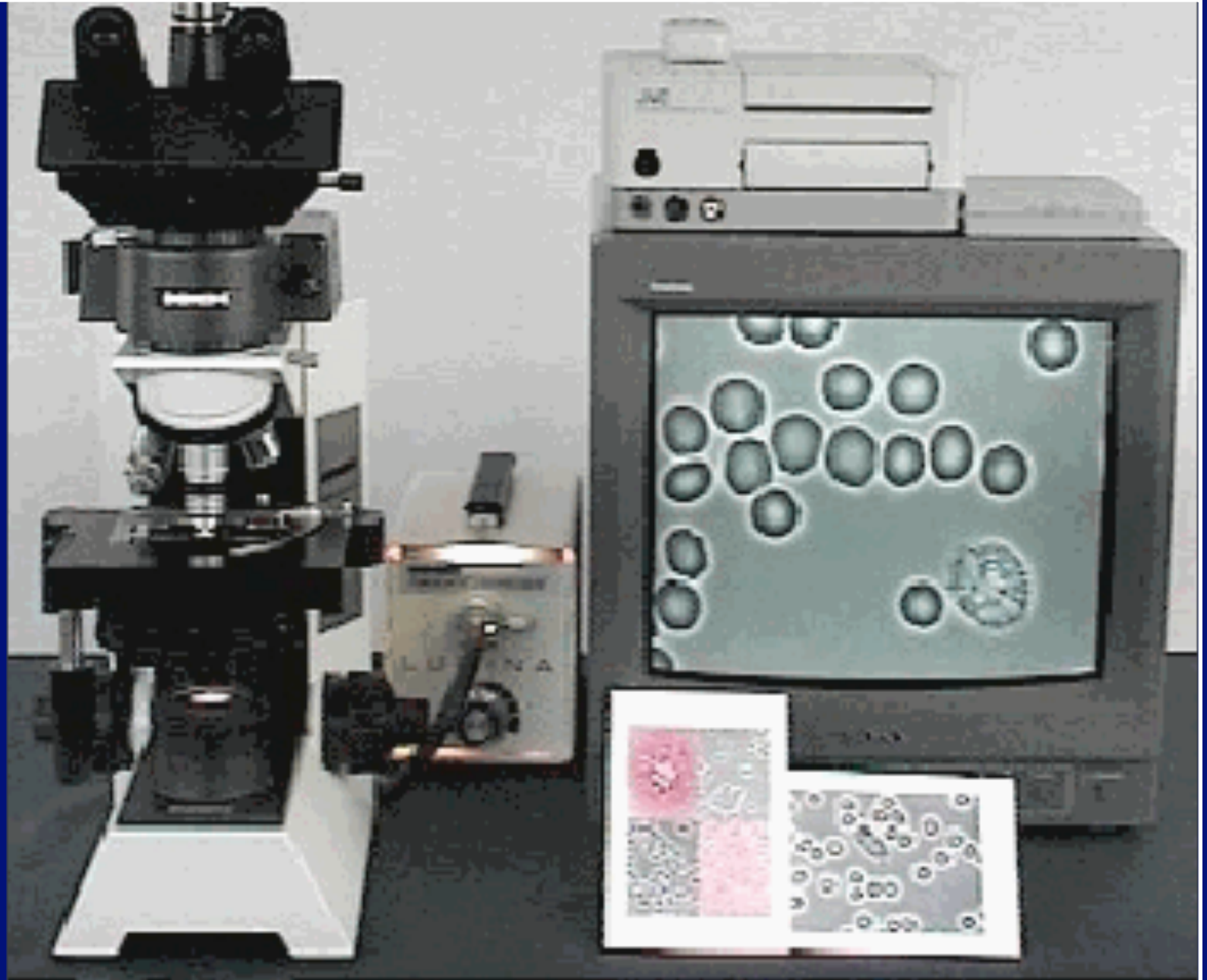
# LIVE BLOOD TEST

based on

Béchamp's and

Enderlein's

discoveries



**Dark Field Microscope invented in 1837**

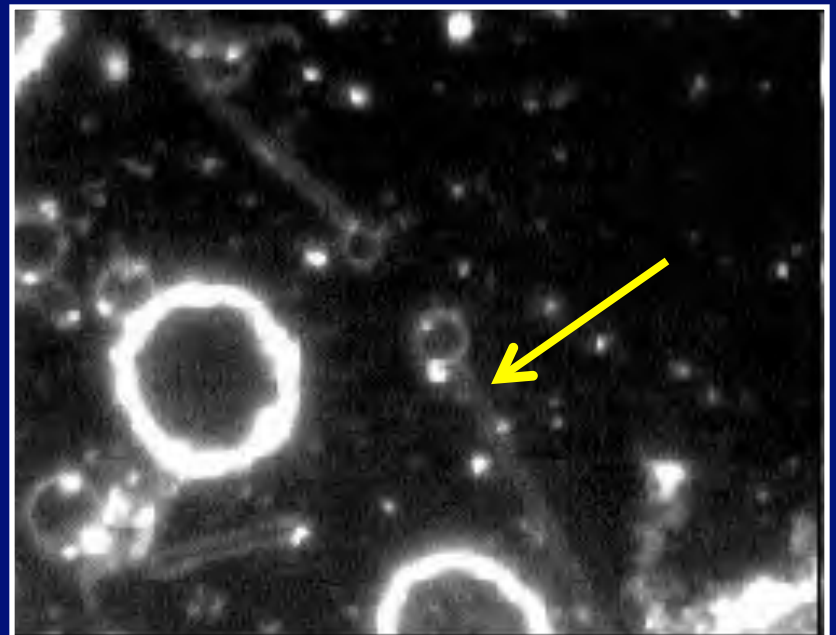
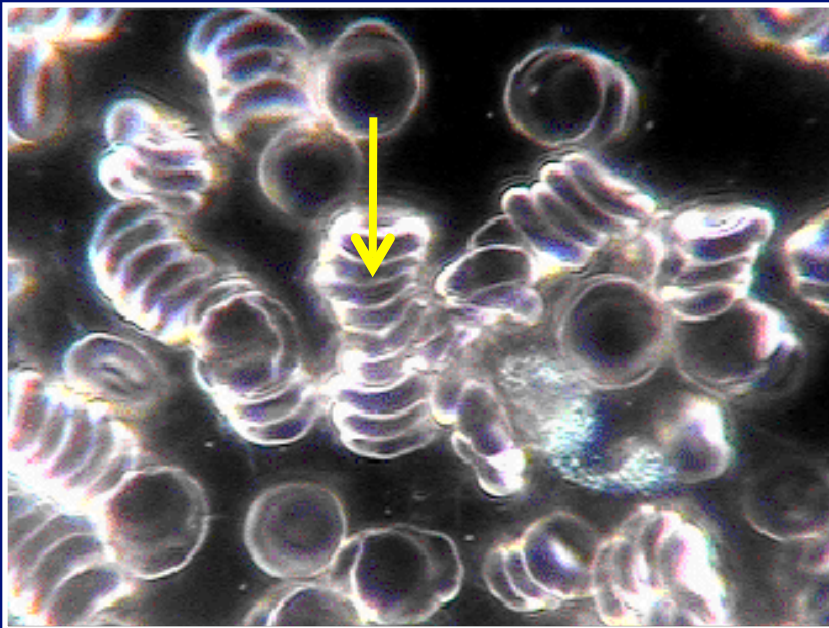
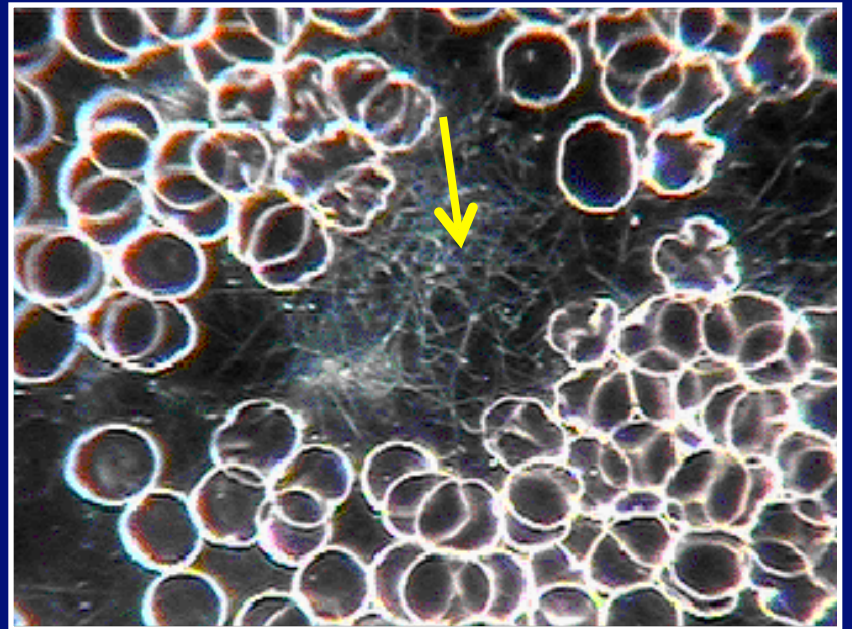
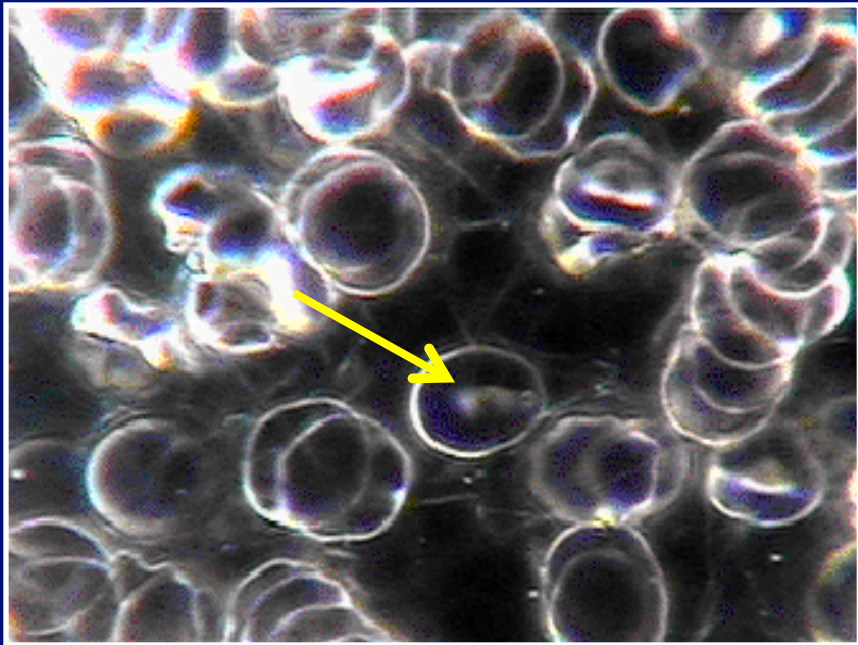


GV

GB

← **Microzymes**  
**Endobionts**  
**ENERGINS**





# KONSTANTIN KOROTKOV



B  
I  
O  
-  
R  
E  
S  
O  
N  
A  
N  
C  
E



SCIENCEPHOTOLIBRARY





# B I O - R E S O N A N C E





**An effective  
alternative  
for the treatment  
and prevention of  
AIDS**

# Principles that may guide the treatment and prevention of AIDS

1. **MAKE CONSCIOUS** his/her psychopathology
2. **STOP THE BELIEF** that AIDS is infectious and sexually transmitted
3. **Point out** real causes
4. **Avoid exposures** to immunological stress agents
5. **Evaluate health status:** *Individual//Community*
6. **Detoxification of immune and other systems**
7. **Stimulation of immune and other systems**
8. **Treatment of clinical manifestations:**  
*opportunistic infections//tumors//metabolic disturbances*
9. **Emphasize natural means and team work**

**“HIV-POSITIVE”** **Progression** **AIDS**  
Prevented by nutritional-antioxidant therapy

**AIDS** **Progression** **DEATH**  
Prevented by nutritional-antioxidant therapy

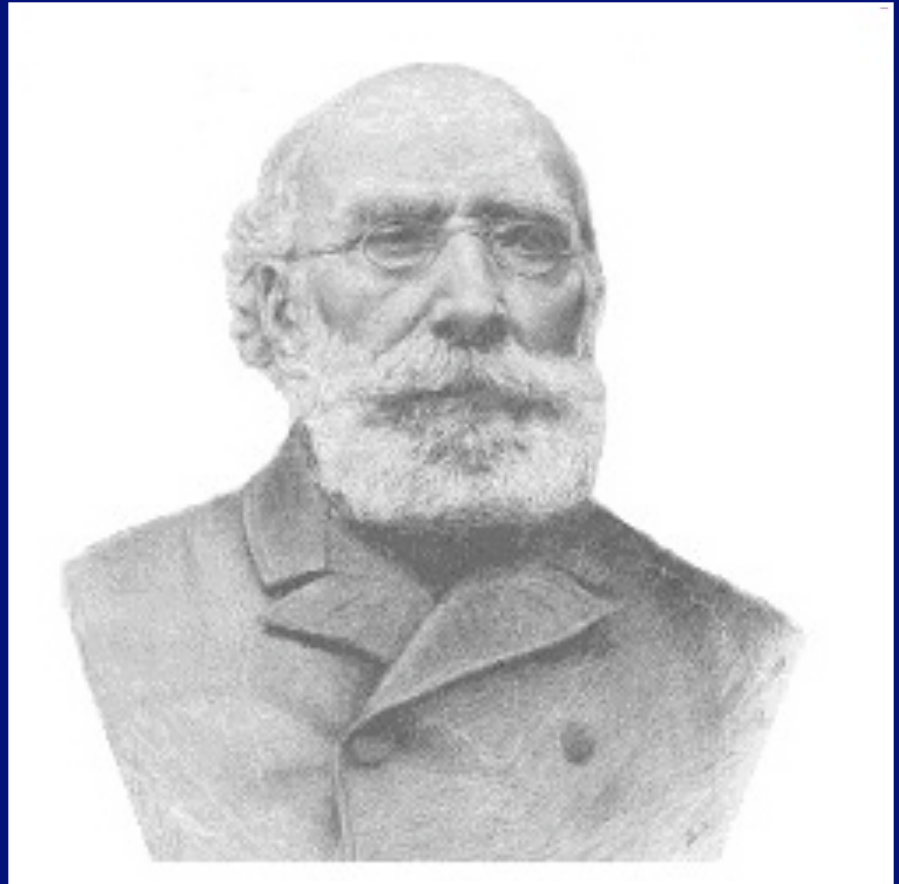
**“HIV-NEGATIVE”** **Seroconversion** **“HIV-POSITIVE”**  
Prevented by nutritional-antioxidant therapy

**“HIV-POSITIVE” MOTHER** **“Vertical Transmission”** **“HIV-POSITIVE” BABY**  
Prevented by nutritional-antioxidant therapy during pregnancy





**LOUIS PASTEUR**  
**1822 - 1895**



**ANTOINE BÉCHAMP**  
**1816 - 1908**

**Two French individuals from  
XIX Century with antagonistic views**

**April 30th, 1878**



**French Academy of  
Sciences**

**PASTEUR'S article**  
**“The Germ Theory**  
**and its applications to**  
**medicine and**  
**surgery”**

**BÉCHAMP:**

**“It is a delirium of Pasteur without any  
bases”**

**“The major scientific stupidity of the time”**

FLORENCE NIGHTINGALE 1820 – 1910

ANTOINE BÉCHAMP 1816 – 1908

CLAUDE BERNARD 1813 – 1878

GÜNTHER ENDERLEIN 1872 – 1968

GASTON NAESSENS 1924 –

RYKE GREERD HAMER 1935 -

*“The development of  
any disease depends on  
internal conditions”*

**“Patient’s power of healing is crucial  
and we have to stimulate it”**

**Hipócrates  
460 bC**

**“Homeopathic remedies act by  
stimulating the body’s inner  
defense mechanisms”**

**Samuel Hahnemann  
1744 – 1843**



**“Inside each of us there is a doctor and we accomplish our mission when we ask our patients to be in contact with their inner doctors”**

**Albert Schweitzer  
(1875-1965)**

**“Man passes his whole life waiting for well-being to come from outside, when it is already in our interior”**

**Norberto Keppe**

# **Preventing and Healing AIDS Through Our Inner Pharmacy**

**Roberto Giraldo, M.D.**

**Foreword by Psychoanalyst  
Cláudia B. S. Pacheco**



**Proton Editora**

# **THANK YOU !**

[www.rethinkingaids.com](http://www.rethinkingaids.com)

[www.robertogiraldo.com](http://www.robertogiraldo.com)

[www.duesberg.com](http://www.duesberg.com)

[www.aliveandwell.org](http://www.aliveandwell.org)

[www.immunity.org.uk](http://www.immunity.org.uk)